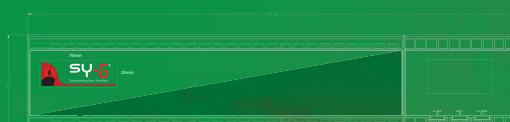
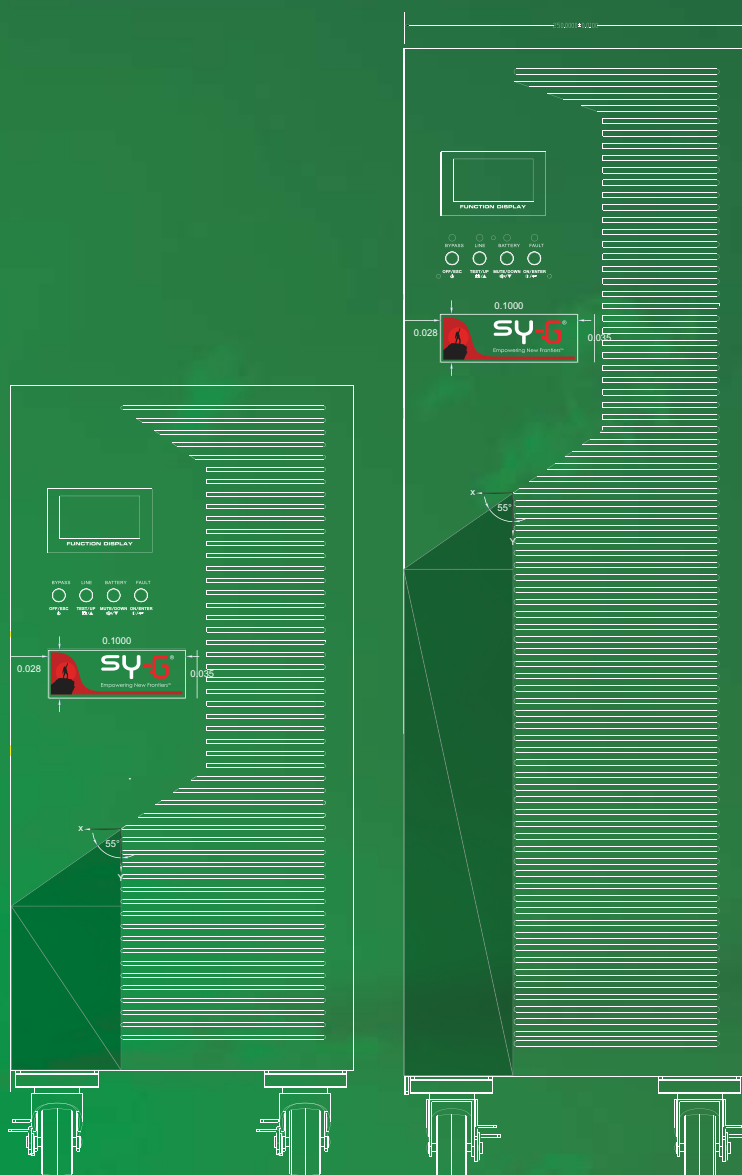


SY-G®

Empowering New Frontiers™



ON-LINE UPS
CHALLENGER SERIES
6 KVA, 10 KVA

www.sy-g.com

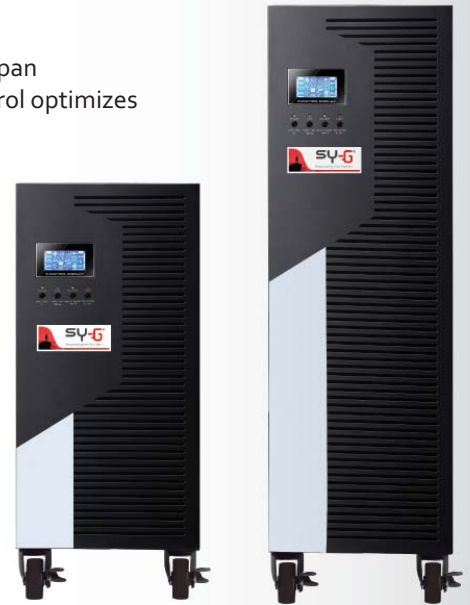
ON-LINE UPS CHALLENGER SERIES 6 KVA, 10 KVA

FEATURES:

- Stand alone and rack-mount UPS
- True on-line double conversion technology
- Wide-input voltage range for harsh environments
- Input Power Factor correction 0.99
- Output power factor 0.9
- IGBT PWM rectifier & inverter technology
- Automatic bypass for fault tolerance
- Frequency converter mode
- Generator compatible
- Friendly LCD Display
- Selectable output voltage via LCD panel
- Multiple communication ports:
USB/ RS-232 and SNMP (optional)
- Adjustable battery numbers
- Adjustable charging current via LCD
or software (1A- 6A)
- Emergency power off (EPO) function

BENEFITS:

- High uptime
- High efficiency
- Extends battery lifespan
- Microprocessor control optimizes reliability
- Ease of maintenance
- User-friendly and programmable



True on-line double conversion technology

A true on-line double conversion UPS is a unit where the inverter is always ON. Therefore, it provides clean, high-level quality power to protect mission-critical applications such as servers, sensitive networks, data centers, telecom devices, medical equipment, and industrial processes.

Wide-input voltage range for harsh environments

The UPS provides stable power to connected devices even under unstable electrical environments. Please refer to individual product specifications for detailed information

Frequency converter mode

The UPS can be used as frequency converter from 50 Hz input to 60 Hz output, or from 60 Hz input to 50 Hz output to suit the requirements of power-sensitive equipment.

Generator Compatible:

The UPS through its robust IGBT rectifier has full compatibility with generators and ensures clean and uninterrupted power to the loads.

Multiple communication ports: USB/ RS-232 and SNMP (optional)

The UPS units employ a wide range of advanced communication protocols (USB, RS-232 and SNMP), which provide remote management capabilities over the network and enable centralized management.

LCD Display Panel

- | | |
|--|---------------------------------------|
| - Remaining backup time information | - Load information |
| - Configuration and Fault information | - Mode operation information |
| - Mute operation | - Battery information |
| - Output & Battery voltage information | - Input & Battery voltage information |

Optional SNMP (Integrated with specialized software)

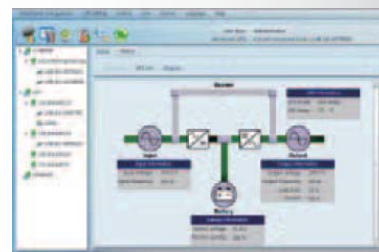
- Allows control and monitoring of multiple UPSs through RJ-45 network connection
- Real-time dynamic graphs of UPS data (voltage, frequency, load level, battery level)
- Warning notifications via audible alarm, broadcast, mobile messenger, e-mail and SNMP traps
- Historic data log stored in centralized PC database
- Simple firmware upgrade with one click
- Password security protection and remote access management
- Supports optional environmental monitoring detector for temperature, humidity and smoke
- Supports the following protocols: http, SNMP, SNMP V2



SNMP Card

Software UPS Management Software

- Allows control and monitoring of multiple UPSs via LAN and INTERNET
- User-friendly power analysis graphs
- Real-time dynamic graphs of UPS data
- Safely OS shutdown and protection from data loss during power failure
- Warning notifications via audible alarm, broadcast, mobile messenger, and e-mail
- Scheduled UPS on/off, battery test, programmable outlet control, and audible alarm control
- Password security protection and remote access management
- Supports multiple OS and local languages



CHALLENGER SERIES 6 KVA, 10 KVA Stand Alone UPS Technical Specification

MODEL		SA1P6HVW		SA1P10HVW	
Phase		Single phase with ground			
Capacity		6000 VA / 5400 W		10000 VA / 9000 W	
INPUT					
Nominal Voltage		208/220/230/240 VAC			
Voltage Range		110-300 VAC @ 50% Load 176-300 VAC @ 100% Load			
Frequency Range		46-54 Hz or 56-64 Hz (Selectable)			
Power Factor		≥ 0.99, Nominal Voltage (100% load)			
Rectifier		IGBT			
OUTPUT					
Output Voltage		208*/220/230/240 VAC			
Voltage Regulation		± 1%			
Frequency Range (Synchronized Range)		46-54 Hz or 56-64 Hz (Selectable)			
Frequency Range (Batt. Mode)		50/60 Hz ± 0.1 Hz			
Current Crest Ratio		3:1			
Harmonic Distortion (THDv)		Linear Load ≤ 3 % ; Non-linear Load ≤ 5 %			
Transfer Time		Zero (AC to DC) ; Zero (Inverter to Bypass)			
Waveform		Pure Sine Wave			
EFFICIENCY					
AC Mode		92%		93%	
Battery Mode		90%		91%	
BATTERY					
Standard Model	Battery Type	12V/9 Ah			
	Numbers	16	20	16	20
	Typical Recharge Time	9 hours recover to 90% capacity			
	Charging Current (max.)	1A/2 A (Adjustable)			
	Charging Voltage	218.4 VDC ± 1%	273 VDC ± 1%	218.4 VDC ± 1%	273 VDC ± 1%
Long-run Model	Battery Type	Depending on the capacity of external batteries			
	Numbers	16 - 20 pcs (Adjustable)			
	Charging Current (max.)	1A/2A/4A/6A (Adjustable, 6A is only available for 16 pcs batteries)			
	Charging Voltage	273 VDC ± 1% (Based on 20 pcs batteries)			
INDICATORS					
LCD Display		Load level, Battery level, AC mode, Battery mode, Bypass mode, and Fault indicators			
ALARM					
Battery Mode		Sounding every 4 seconds			
Low Battery		Sounding every second			
Overload		Sounding twice every second			
Fault		Continuously sounding			
PHYSICAL					
Standard Model	Dimensions (DxWxH) (mm)	369 x 190 x 688	442 x 190 x 688		
	Net Weight (kg)	61	74	66	76
Long-run Model	Dimension (DxWxH) (mm)	369 x 190 x 318		442 x 190 x 318	
	Net Weight (kg)	12		16	
ENVIRONMENT					
Running Humidity & Temperature		0 - 95 % RH (Non-condensing) @ 0 - 40°C			
Noise Level		< 55 dB @ 1 meter		< 58 dB @ 1 meter	
MANAGEMENT					
Smart RS-232 /USB		Supports Windows® 2000/2003/XP/Vista/2008, Windows®7/8, Linux, Unix, and MAC			
Optional SNMP		Power management from SNMP manager and web browser			
STANDARDS & CERTIFICATIONS					
Quality		ISO 9001 ; ISO 14001			
Compliance		EN62040-3 ; EN61000 ; EN62040-2:2006 ; EN62040 -1: 2008 ; CE			

* Derate to 60% of capacity in Frequency converter mode and to 90% when the output voltage is adjusted to 208 VAC

SY-G reserves the right to change or modify product design, construction, specifications, or materials without prior notice and without incurring any obligation to make such changes and modifications on SY-G products previously or subsequently sold.

CHALLENGER SERIES 6 KVA, 10 KVA Rack Mount UPS Technical Specification

MODEL		RM1P6HVW		RM1P10HVW	
Phase		Single phase with ground			
Capacity		6000 VA / 5400 W		10000 VA / 9000 W	
INPUT					
Nominal Voltage		208/220/230/240 VAC			
Voltage Range		110-300 VAC ± 3% @ 50% Load 176-300 VAC ± 3% @ 100% Load			
Frequency Range		46-54 Hz or 56-64 Hz (Selectable)			
Power Factor		≥ 0.99, Nominal Voltage (100% load)			
Rectifier		IGBT			
OUTPUT					
Output Voltage		208*/220/230/240			
VAC Voltage Regulation		± 1%			
Frequency Range (Synchronized Range)		46-54 Hz or 56-64 Hz (Selectable)			
Frequency Range (Batt. Mode)		50/60 Hz ± 0.1 Hz			
Current Crest Ratio		3:1			
Harmonic Distortion (THDv)		Linear Load ≤ 3 % ; Non-linear Load ≤ 5 %			
Transfer Time		Zero (AC to DC) ; Zero (Inverter to Bypass)			
Waveform		Pure Sine Wave			
EFFICIENCY					
AC Mode		92%		93%	
Battery Mode		90%		91%	
BATTERY					
Standard Model	Battery Type	12V/9 Ah			
	Numbers	16	20	16	20
	Typical Recharge Time	9 hours recover to 90% capacity			
	Charging Current (max.)	1A/2 A (Adjustable)			
	Charging Voltage	218.4 VDC ± 1%	273 VDC ± 1%	218.4 VDC ± 1%	273 VDC ± 1%
Long-run Model	Battery Type	Depending on the capacity of external batteries			
	Numbers	16 - 20 pcs (Adjustable)			
	Charging Current (max.)	1A/2A/4A/6A (Adjustable, 6A is only available for 16 pcs batteries)			
	Charging Voltage	218.4 VDC ± 1% (Based on 16 pcs batteries)			
INDICATORS					
LCD Display		Load level, Battery level, AC mode, Battery mode, Bypass mode, and Fault indicators			
ALARM					
Battery Mode		Sounding every 4 seconds			
Low Battery		Sounding every second			
Overload		Sounding twice every second			
Fault		Continuously sounding			
PHYSICAL					
Standard Model	Dimensions (DxWxH) (mm)	UPS unit: 500 x 438 x 88 (2U) Battery Pack: 668 x 438 x 88 (2U)	UPS unit: 500 x 438 x 88 (2U) Battery Pack: 580 x 438 x 133 (3U)	UPS unit: 580 x 438 x 133 (3U) Battery Pack: 580 x 438 x 133 (3U)	
	Net Weight (kg)	UPS Unit: 15 Battery Pack: 48	UPS Unit: 15 Battery Pack: 61	UPS Unit: 18 Battery Pack: 51	UPS Unit: 18 Battery Pack: 61
Long-run Model	Dimension (DxWxH) (mm)	500 x 438 x 88 (2U)		580 x 438 x 133 (3U)	
	Net Weight (kg)	15		18	
ENVIRONMENT					
Running Humidity & Temperature		0 - 95 % RH (Non-condensing) @ 0 - 40°C			
Noise Level		< 55 dB @ 1 meter		< 58 dB @ 1 meter	
MANAGEMENT					
Smart RS-232 /USB		Supports Windows® 2000/2003/XP/Vista/2008, Windows®7/8, Linux, Unix, and MAC			
Optional SNMP		Power management from SNMP manager and web browser			
STANDARDS & CERTIFICATIONS					
Quality		ISO 9001 ; ISO 14001			
Compliance		EN62040-3 ; EN61000 ; EN62040-2:2006 ; EN62040 -1: 2008 ; CE			

* Derate to 80% of capacity in Frequency converter mode and to 80% when the output voltage is adjusted to 208 VAC
Sy-G reserves the right to change or modify product design, construction, specifications, or materials without prior notice
and without incurring any obligation to make such changes and modifications on Sy-G products previously or subsequently sold.



Product specifications are subject to change without further notice.



Empowering New Frontiers™

